

Changes of tree population after natural disasters

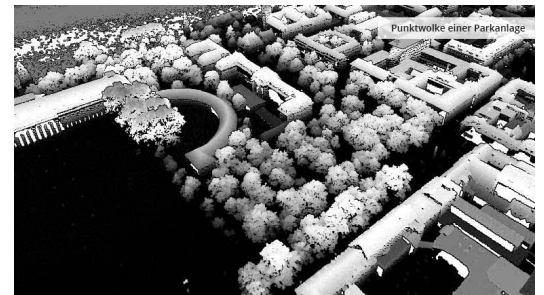
Challenge

Data sets from different points in time were available (before and after the event) which were ought to be evaluated quickly and accurately to show how the tree population changed after a natural disaster, in this case a hurricane.



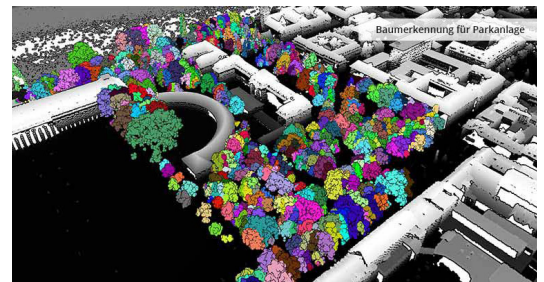
Solution

The automated vegetation analysis, which compares data-sets from different points in time using machine learning, efficiently provided an evaluation of where and what damage occurred.



Result

The customer was able to get a general overview of the effects of the natural disaster and knew to what extent trees had been damaged or even destroyed. This provided the basis for damage repair measures, the restoration of traffic safety or reforestation projects.



- **Data analysis**
- **Automated vegetation analysis**
- **Tree maintenance, reforestation, restoration of traffic safety**